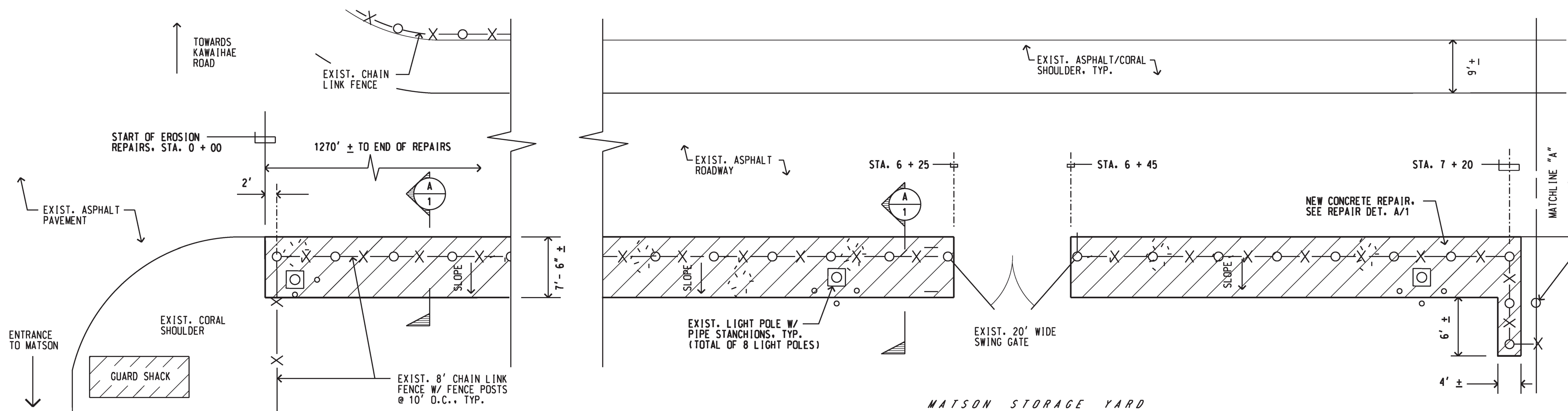
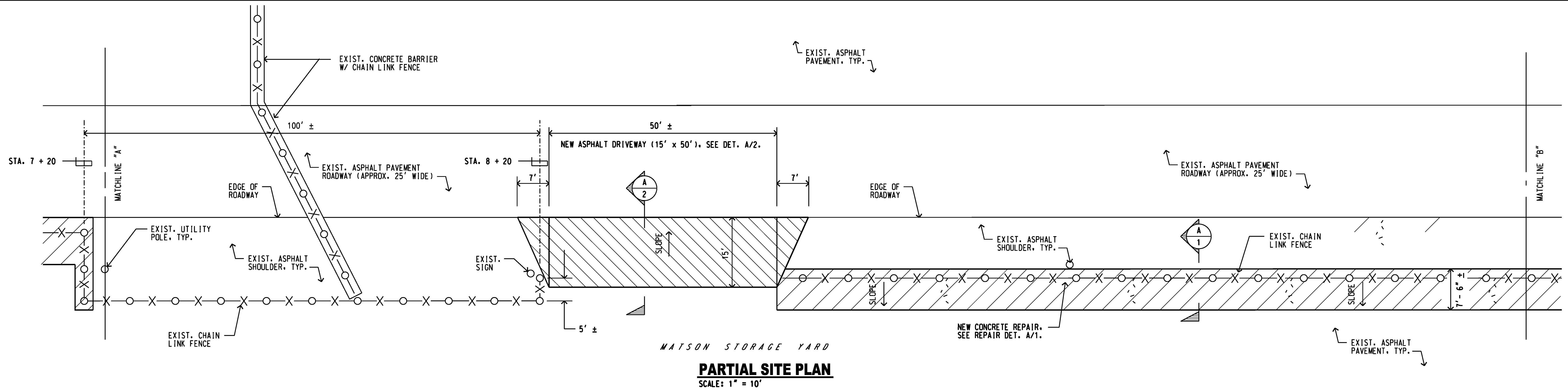


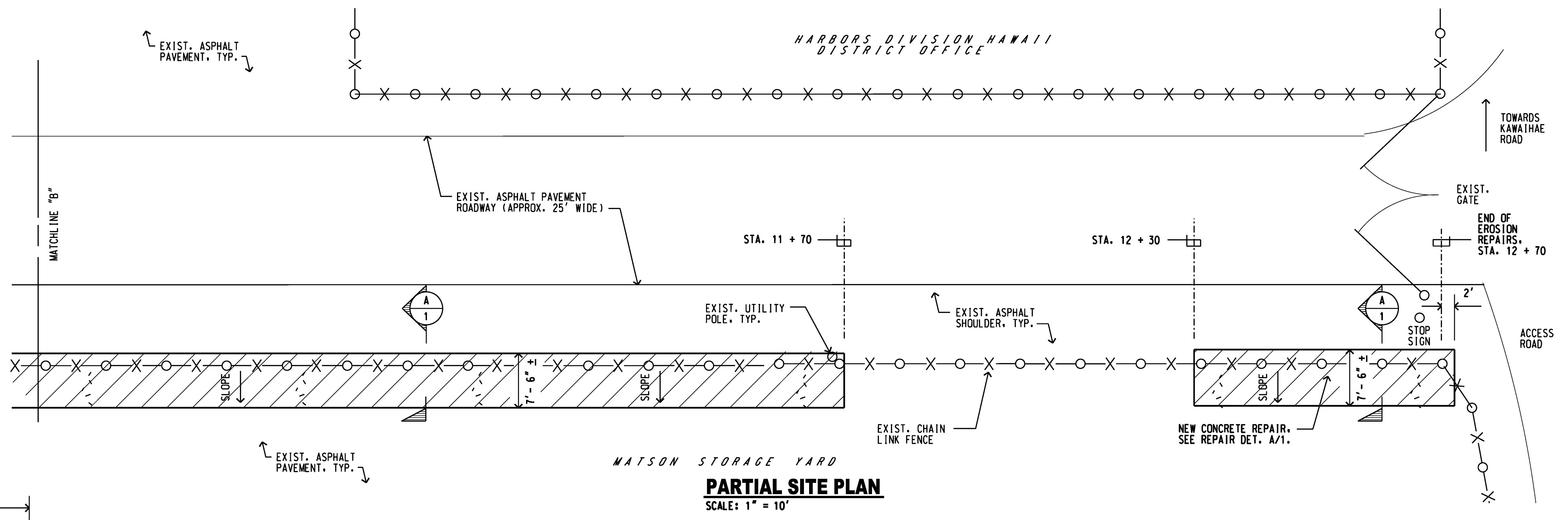
- GENERAL NOTES:**
- CONTRACTOR SHALL VERIFY CONDITIONS AND DIMENSIONS IN THE FIELD PRIOR TO ORDERING MATERIALS. CONTRACTOR SHALL EXERCISE CAUTION TO PREVENT DAMAGE TO EXISTING STRUCTURES, UTILITIES AND EQUIPMENT IN THE PROJECT AREA.
 - ALL WORK SHALL BE COORDINATED WITH THE HARBORS DIVISION HAWAII DISTRICT MANAGER AND THE CONSTRUCTION ENGINEER.
 - ALL STRUCTURES AND PORTIONS OF STRUCTURES SHOWN ON THE PLAN ARE EXISTING UNLESS SPECIFICALLY NOTED. EXISTING CONDITIONS SHOWN ARE BASED ON THE BEST AVAILABLE INFORMATION. NO GUARANTEE IS GIVEN THAT THEY ARE MORE THAN APPROXIMATELY CORRECT. CLEAR WITH HAWAII ONE CALL CENTER (HOCC) BEFORE EXCAVATION (811) OR (866)-423-7287.
 - THE CONTRACTOR SHALL COMPLY WITH THE CLEAN WATER ACT AND THE STATE HARBORS DIVISION STORMWATER MANAGEMENT PROGRAM. NO POLLUTANT IS ALLOWED TO BE DISCHARGED DIRECTLY OR INDIRECTLY THROUGH THE HARBORS SMALL MS4 OR OTHER POTENTIAL PATHWAYS IN TO HARBOR WATERS.
 - THE CONTRACTOR SHALL SUBMIT A SITE-SPECIFIC MANAGEMENT PRACTICE (BMPs PLAN AND HEALTH & SAFETY PLAN TO HARBORS DIVISION ENGINEERING BRANCH PRIOR TO THE START OF ANY CONSTRUCTION WORK.
 - IN CASE OF HAZARDOUS SUBSTANCE, OIL OR ENCOUNTER OF CONTAMINATED SOIL, CONTRACTOR SHALL NOTIFY THE APPROPRIATE FACILITY PERSONNEL, EMERGENCY RESPONSE AND REGULATORY AGENCIES FOLLOWING NOTIFICATION PROCEDURES, AND SHALL NOTIFY THE HARBORS DIVISION CONSTRUCTION ENGINEER IMMEDIATELY (1-8-1 WITHIN 24 HOURS). CONTACT INFORMATION MUST BE IN A LOCATION THAT IS READILY ACCESSIBLE AND AVAILABLE. CONTRACTOR SHALL NOTIFY THE HDOH HARBORS DIVISION ENGINEERING BRANCH ENVIRONMENTAL HOTLINE (808-587-1962) AND DESIGNATED HARBORS PROJECT ENGINEER OF ANY ILLEGAL DISCHARGE AND/OR SPILL/RELEASE THAT OCCURS ONSITE.



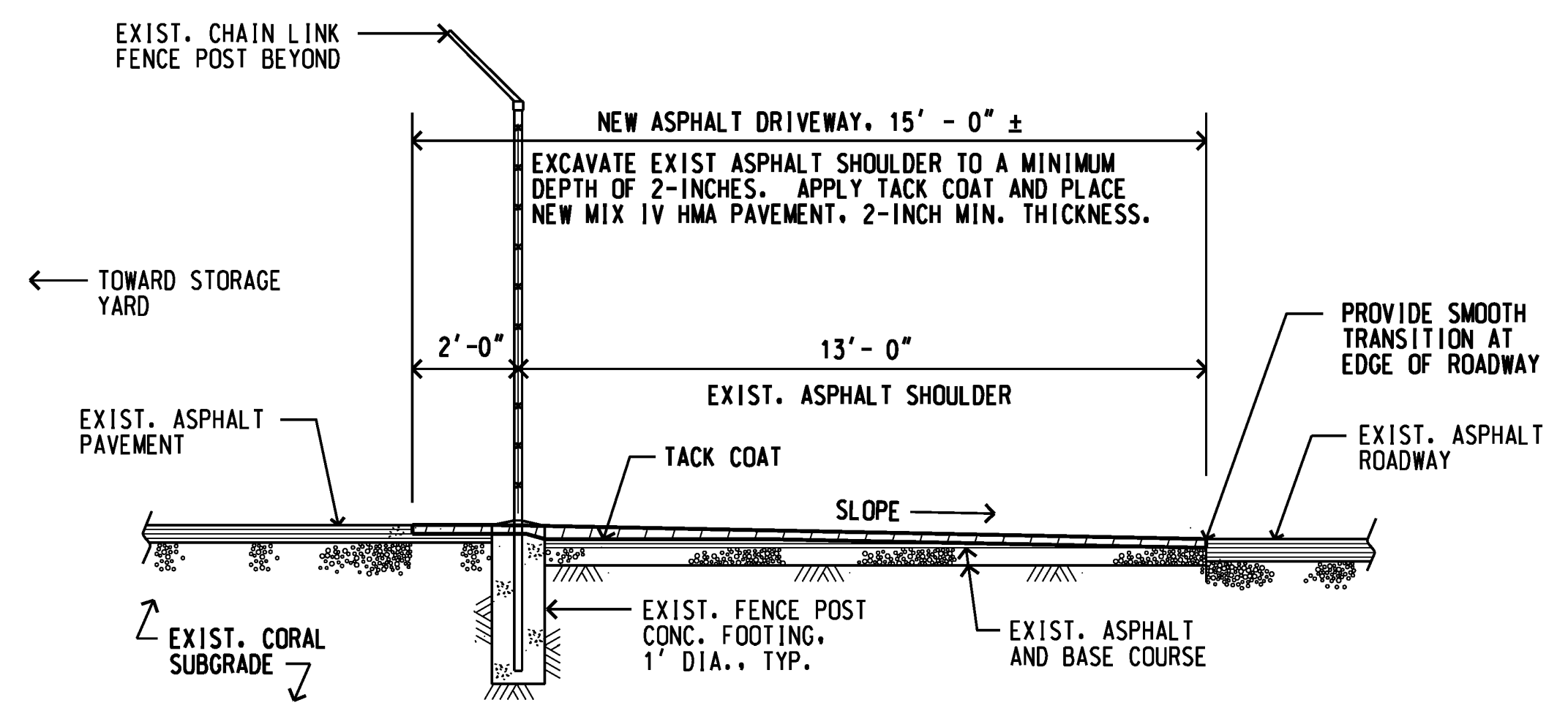
REV		DATE		DESCRIPTION		BY		APPROVED	
STATE OF HAWAII DEPARTMENT OF TRANSPORTATION HARBORS DIVISION									
JOB TITLE				EROSION REPAIRS & VEHICLE BARRIER INSTALLATIONS KAWAIHAE HARBOR, KAWAIHAE, HAWAII					
SHEET TITLE				SITE PLAN, PARTIAL PLAN, EROSION REPAIR DETAIL					
SUBMITTED BY: <i>Carol Johnson</i>				RECOMMENDED BY: <i>W. S. Sato</i>					
SECTION HEAD				ENGINEERING PROGRAM MANAGER					
DESIGNED BY: DCA		APPROVED BY: <i>W. S. Sato</i>				SHEET 1 1 OF 4 SHTS.			
DRAWN BY: DCA		FOR HARBORS ADMINISTRATOR							
CHECKED BY: AF		JOB NUMBER							
DATE: OCTOBER 2022		SCALE: AS SHOWN							
		S 50207							



PARTIAL SITE PLAN
SCALE: 1" = 10'

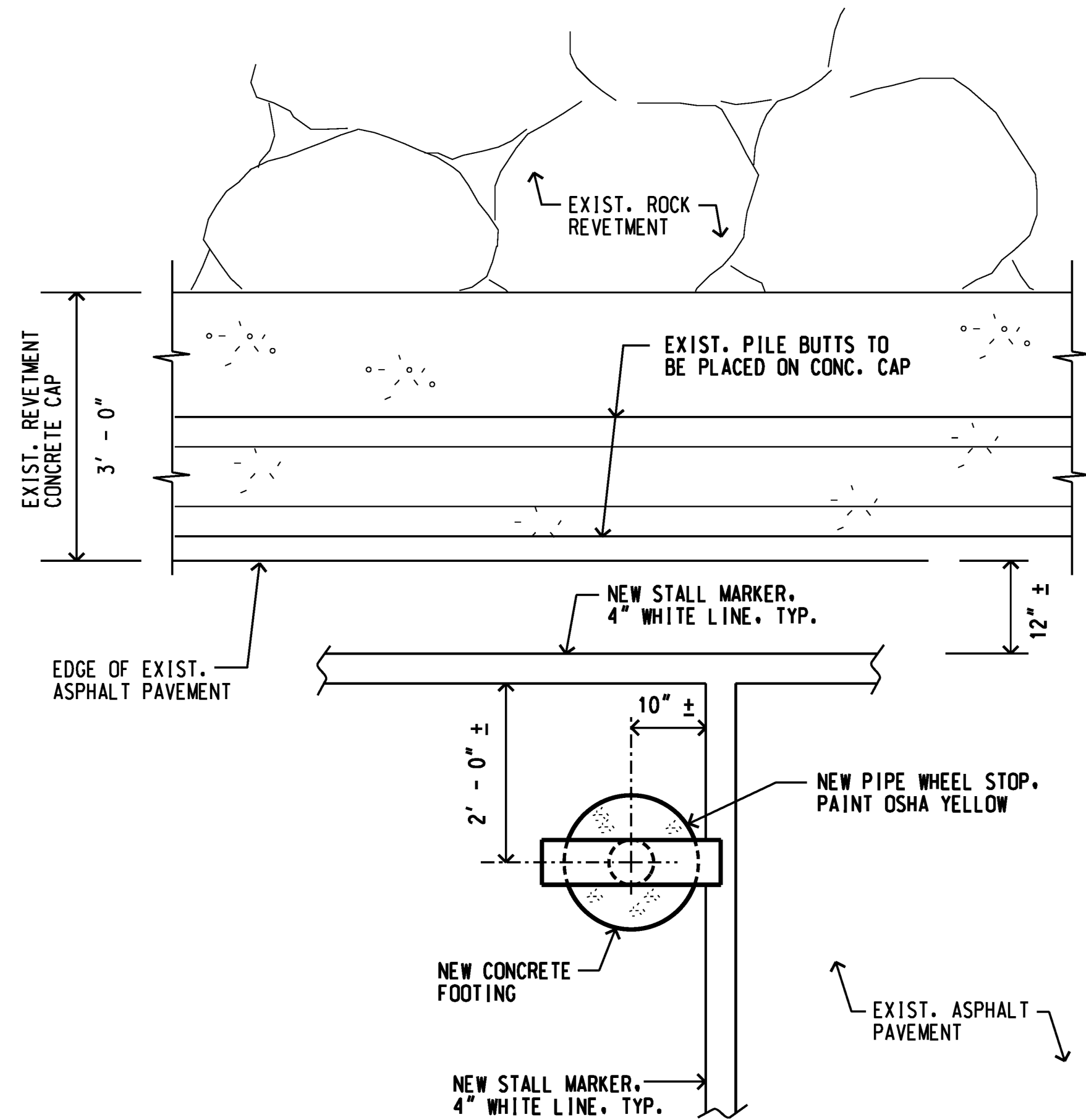


PARTIAL SITE PLAN
SCALE: 1" = 10'

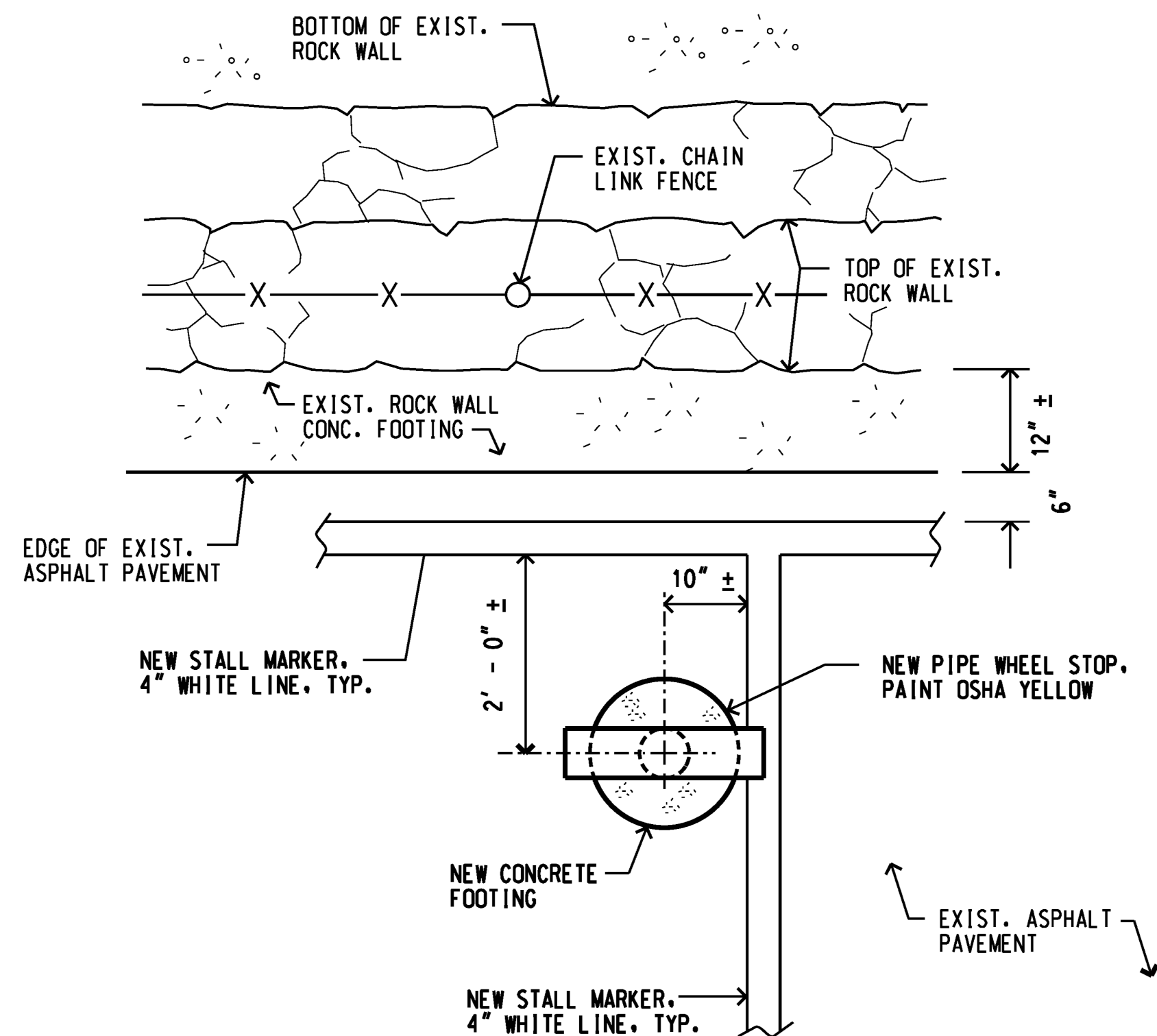


A
2 **NEW DRIVEWAY SECTION**
SCALE: 3/8" = 1' - 0"

REV	DATE	DESCRIPTION	BY	APPROVED
STATE OF HAWAII DEPARTMENT OF TRANSPORTATION HARBORS DIVISION				
JOB TITLE EROSION REPAIRS & VEHICLE BARRIER INSTALLATIONS KAWAIHAE HARBOR, KAWAIHAE, HAWAII				
SHEET TITLE PARTIAL PLANS, NEW DRIVEWAY SECTION				
SUBMITTED BY:		RECOMMENDED BY:		
DESIGNED BY: DCA		APPROVED BY:		
DRAWN BY: DCA		FOR HARBORS ADMINISTRATOR		
CHECKED BY: AF		JOB NUMBER		
DATE: OCTOBER 2022		S 50207		
SCALE: AS SHOWN		SHEET 2 2 of 4 SHTS.		



LAYOUT AT REVETMENT

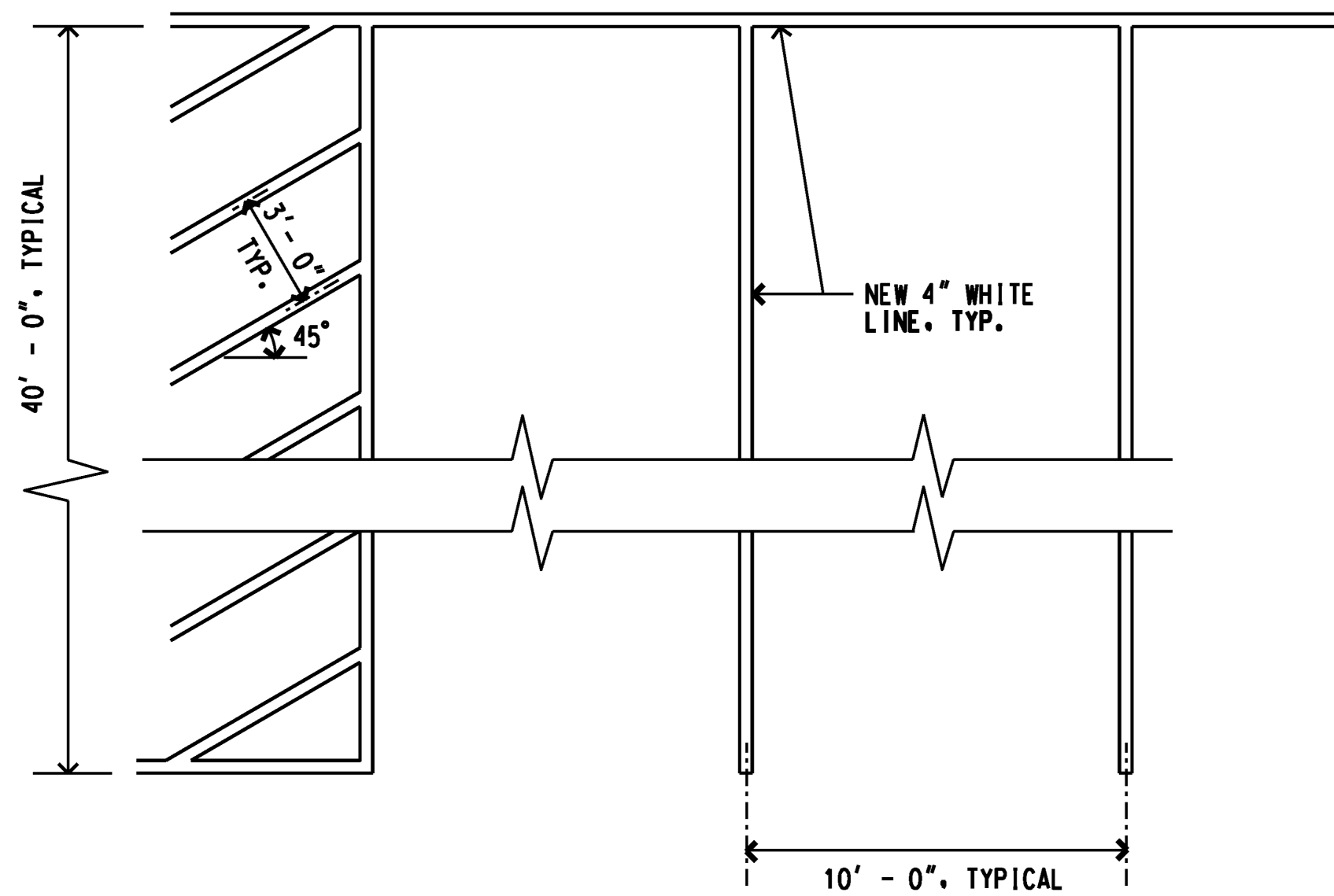


LAYOUT AT ROCK WALL

NOTE: NEW WHEEL STOP LOCATIONS SHALL BE ADJUSTED ACCORDINGLY IN FIELD. WHEEL STOPS SHALL BE INSTALLED ON THE DRIVER SIDE OF THE NEW PARKING STALL.

NEW WHEEL STOP LAYOUT PLAN

SCALE: 3/4" = 1' - 0"



NEW PARKING STALL STRIPING PLAN

SCALE: 1/4" = 1' - 0"

REV	DATE	DESCRIPTION	BY	APPROVED
STATE OF HAWAII				
DEPARTMENT OF TRANSPORTATION				
HARBORS DIVISION				
JOB	TITLE			
	EROSION REPAIRS & VEHICLE BARRIER INSTALLATIONS			
	KAWAIHAE HARBOR, KAWAIHAE, HAWAII			
SHEET	TITLE			
	WHEELSTOP & PARKING STALL LAYOUT			
SUBMITTED BY:		RECOMMENDED BY:		
SECTION		HEAD		
DESIGNED BY: DCA		APPROVED BY:		
DRAWN BY: DCA		FOR HARBORS ADMINISTRATOR		
CHECKED BY: AF		JOB NUMBER		
DATE: OCTOBER 2022		S50207		
SCALE: AS SHOWN		SHEET		
		4 OF 4 SHOTS		